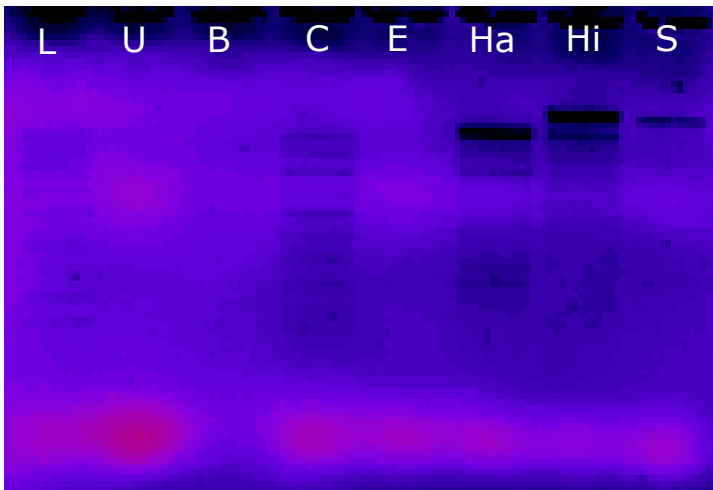


Restriction digest of your phage (L- ladder, U-undigested DNA, B-BamH1, C-Cla, E-EcoR1, Ha-Hae, Hi-HindIII, S-Sal)



SAME restriction digest, I only inverted the image to better see the bands that each enzyme cut



SAME restriction digest as the images above, I pseudo-colored the gel to make the bands more visible. The right image is a 3D surface plot, illustrating the bands as "hills" in each lane. You can see the bands a little better specifically in the 'C' lane. (the higher black peaks closer to the top are the wells)

